

Annual Report

Lake Country Heritage and Cultural Society

2012



Lake Country Heritage and Cultural Society / Lake Country Museum and Archives
11255 Okanagan Centre Road west
Lake Country, BC V4V 2J7
www.lakecountrymuseum.com

Message from the President

We have had another very good year at the Lake Country Museum and Archives. We have attracted to the Board three new members: Addie Maehara, who has taken the lead on the various Japanese Canadian initiatives that we are undertaking, Tom Turner, our Treasurer, and Laura Neame, our Archivist. These three bring considerable expertise and great enthusiasm to the Board and I welcome them. We have an active Board, some members having specific areas of responsibility and others having equally important general functions. One of our Board members, Rosemary Carter, has this year been awarded the Distinguished Service Award from the Central Okanagan Heritage Society in recognition of her work with the Museum and with Gibson House. Without Board leadership and tremendous support from our volunteers, we would not function at anywhere near the level that we do. Thank you all.

In 2012 we mounted the successful *Hecho a Mano* exhibition on Mexican culture. This summer we are launching *Kakonosedai: A Century of Community*, an exhibition on Japanese Canadian pioneers in Lake Country. With this exhibition, the Museum is building on the successful mounting of the Japanese Canadians of Lake Country Virtual Museum of Canada exhibition. This exhibition will be coordinated with a lecture on the Japanese Canadian experience and with a Japanese-themed Centrepiece. We are also publishing a book on this topic that will incorporate video interviews through QR codes. Also on the curatorial side, we are completing our project to exhibit the Harvey insect collection. Volunteer Kevin Dooley built the display cases in which we are exhibiting the bulk of the collection. Dan Bruce and Ward Strong are supervising an Okanagan College student, Kyle Fitzpatrick, in identifying, cataloguing, arranging, and displaying the remaining insects. This project is nearing completion.

On the archival side, Laura Neame, with several dedicated volunteers are busy preserving and cataloguing our collection. Work has begun conserving and accessioning the Rainbow Ranche Collection and numerous other small collections. Interviews with pioneers are adding to our archival collection.

The website content is being substantially increased with the addition of some elements of the *Living Landscapes* website developed by the Royal BC Museum. Additional material will further increase our readership over time. The website usage has grown substantially over the last few years, growing from a daily average hit-rate of 772 in 2010-2011 to 5,383 in 2012-2013.

The Museum visibility in the community is enhanced by exhibits at the District of Lake Country Municipal Hall and by our public lecture series, historical markers throughout the community, our support of Centrepiece, and our participation in examining heritage issues in the community. As well, we have maintained our school programming and collaborated with UBCO with student-teacher research projects. Our volunteers and student employees have been busy videotaping interviews of pioneer family members, accessioning collected materials, maintaining our museum exhibits, preparing pamphlets and guides, and welcoming visitors and researchers.

We have also decided to discontinue using the annex as an exhibition space and are converting it to a museum-themed covered dining area for the Patio Café.

The Lake Country Heritage and Cultural Society is generously supported by the District of Lake Country, for which we are thankful. We collaborate with the DLC on numerous projects and share Council's interest in "branding" our community as a wonderful place in which to work and live and an interesting place to visit. We have also been asked for advice on the issue of the heritage value of the buildings along the beach at Okanagan Centre and I have represented the Society on various Community Sustainability and Pelmeash Parkway workshops.

Thank you all for making 2012 a great year at the Lake Country Museum and Archives.



Duane Thomson
President
Lake Country Heritage and Cultural Society



In 2013, the Lake Country Museum celebrates twenty-eight years as a community museum and archives. The Museum, located at the shore of Lake Okanagan, houses artefacts, archival photographs, and collections from the District of Lake Country's earliest days. The main building of the museum is a historic two-room schoolhouse, where students were taught from 1932 to the mid-1980s. The museum also includes the Annex, an outdoor exhibit area, and the Wentworth Cabin, built by Cyril and Joseph Wentworth in 1906 and relocated to the museum grounds in 1998. The Lake Country Museum and Archives are open year round. Admission is by donation.

Museum Hours

In 2012, the Lake Country Museum's summer hours, from May 13th through September 3rd, were 10am to 4pm seven days a week. Winter hours were Mondays, Wednesdays, and Saturdays from 1-4pm, and by appointment. The Museum also opened additional days on request, for school tours, researchers, and UBCO student teachers.

Visitors in 2012 = 1849

This does not include attendance at lectures or museum programs at community locations.

Visitors in 2011 = 1533

Volunteers / Staff

The LCMA currently has two part-time staff, Curator, Dan Bruce, (2 days/month) and Manager, Shannon Jorgenson (16 hours/week), and 32 volunteers, without whom the Museum could not operate.

Volunteer hours for 2012 = 2294 hours

Volunteer hours for 2011: 1905 hours

The LCMA employed two summer students in 2012, with wages partially paid through HRDC Canada Summer Jobs funding.

Ok Patio Cafe

The Museum's seasonal restaurant, The Ok Patio Café was open seven days a week, weather permitting, from May 12th through September 3rd, 2012. The restaurant is managed and operated by Sharon Brooks.

Collections & Archives

Through its exhibits and archives, the Museum tells the story of the District of Lake Country and its four wards of Winfield, Oyama, Carr's Landing, and Okanagan Centre. The Museum's artefacts include the histories of the orchard, wine, and ranching industries, turn of the century living, and collections from the early Japanese community. The outdoor exhibits include an antique pleasure boat, farm wagons, ploughs, and the 1906 Wentworth Cabin. The Archives currently house over 2000 photographs, a large collection of manuscripts, ledgers, maps, library, and a full collection of the Lake Country Calendar. The Museum's collection of over 4000 artefacts are either on display or in storage and rotated on exhibit. The majority of items in the collection have been donated by local residents.



The Harvey Insect Collection

New display cases were built for the Harvey Insect Collection and the Collection's permanent exhibition opened in September. This extensive collection of insects and arachnids was donated to the museum by Mr. Ed Harvey, who began his private collection in 1945 and over the years collected thousands of specimens. Mr. Jim Harvey, Ed's brother, an entomologist who assisted with the collection, was present at the exhibition opening as was Kevin Dooley, the craftsman who built the display cases.



Through the early part of 2013, Kyle Fitzpatrick is working with the Museum as an intern, under the direction of Dr. Ward Strong, research scientist at the Kalamalka Forestry Centre, and LCMA curator, Dan Bruce. Kyle is an Okanagan College student; funding for his position comes from a President's Student Projects Fund for special projects that include a community component and a learning opportunity for top students. Kyle's work involves identification, conservation, and mounting of part of the Harvey Insect Collection



The Rainbow Rancho Collection

The LCMA has received a generous donation of the original Rainbow Rancho documents and ledgers which are now stored on site in the Archives with conservation work and cataloguing in progress. The Hamber Foundation awarded partial funding for materials and equipment to properly catalogue and store the Rainbow Rancho Collection.

The Gibson/Arnold Collection

The Gibson Arnold Collection of Syilx points, arrowheads, and tools is on display at the Museum. Archaeologist Todd Paquin of Golder Associates has photographs of each item in the Gibson/Arnold Collection and is donating his time to identify each item by its material, approximate age, and traditional use.



David Madison Aerial Photos

David Madison of Lake Country donated digital images of his aerial photographs in 2012. The Madison Collection contains more than two hundred images and documents Lake Country from the sky.

Archival and Artefact Acquisitions

Important additions to the Archives photograph collection included the John Stokes Collection of the early 1900s and donations by Harley Smith. Personal items belonging to George Elliot and local historical artefacts were donated by the Elliot family. The LCMA received a number of archival donations in 2012, and the photographs, manuscripts, and books were added to the collections. Digitization of archival items is continuing. The Koyukai Minutes have been digitized (350 pages), and translation from Japanese to English is needed.

Permanent Exhibits

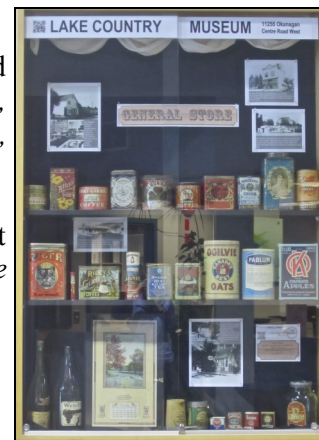
Ongoing work and exhibit rotation took place throughout the year. The Museum's new permanent exhibits in 2012 featured selections of pottery from the Nagel/Galenkamp Collection, additions to the Oceola Arts Council Case and The Store exhibit, early casks donated by Gray Monk Winery, and the Harvey Insect Collection. Ongoing permanent exhibits included First Nations, pioneer Northcote Henry Caesar, Sigh Kobayashi and early electronics, children's toys, natural history, and tools and equipment of the early ranching and orchard industries.



Satellite Exhibits

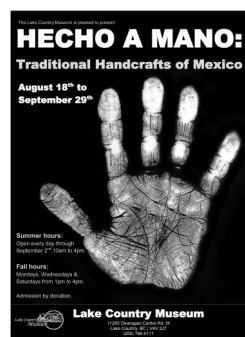
The Museum's satellite exhibits at the District of Lake Country Municipal Building included *Street Names*, *Lake Country Sweethearts*, *Early Churches of Lake Country*, *Service Stations*, *Gibson House 100th Anniversary*, *Gardening in Lake Country*, *Hecho a Mano* satellite exhibit, *Early Lake Country Schools*, *Military Connections*, and *An Old Fashioned Christmas Tree*.

The Museum is working with George Elliot Secondary School to mount a permanent exhibit at GESS, featuring photographs and personal items belonging to George Elliot. *The George Elliot Story* is planned to open in April 2013.



Feature Exhibition – Hecho a Mano

A special exhibition, *Hecho a Mano: Traditional Handcrafts of Mexico*, was presented at the Museum from August 18th through to September 29th, 2012. The exhibition featured a selection of glass, textiles, ceramics, woodwork, metal, and worked leather handcrafts dating from Pre-Columbian to contemporary times, copies of ancient codices from Madrid, and traditional costumes. The exhibition also included a photography exposition featuring the portraits and stories of Mexican migrant workers in our community. During the exhibition, the Museum was open extended hours and attracted 543 visitors.



Curator's Report

The Harvey Collection of Entomology is now housed in the custom made showcases, and the diligent work of Kyle Fitzpatrick and Ward Strong is nearing completion. This collection is certainly of scientific value, but also has social significance in that the Harvey family is of long standing in our area. We have several other items in our collection that belonged to them, notably the two mounted Great Horned Owls and the Mule Deer head in the Anne Land room.

The group of historic tennis and badminton trophies that were at the Gibson House have now been brought to the Lake Country Museum, to join those already here. We thank Alison Campbell-Urness of the Parks Department, RDCO and our own Rosemary Carter for helping to bring this about.

A recent visit to the steel box storage unit at Jack Seaton Park revealed a problem caused by condensation, resulting in water dripping from the ceiling. To date, no serious damage has occurred, but this does draw attention to our urgent need for secure storage space.

A chance find in an antiquarian bookshop provided some interesting and detailed information about Prince Oyama, one of the Japanese commanders during the Russo-Japanese war of 1904. Prince Oyama and Admiral Togo were both presented with the British "Order of Merit", a medal conferred on them by King Edward VII. The full story of this event is given in the book, "The Garter Mission to Japan" published in 1906. It is the diary of Lord Redesdale who was sent to Japan as King Edward's special envoy to award the Emperor Meiji with Great Britain's "Order of the Garter". This was in 1906, the year in which Oyama in Lake Country was named, reflecting the widespread enthusiasm for Japan in the conflict with Russia. This in spite of the fact that the Tsar of Russia was Edward VII's cousin!

Dan Bruce, Curator

Annual Archival Report

2012/2013

Several fonds have been completed. These include the Winfield Farmer's Institute, the Kalamalka Women's Institute, Harley Smith Collection, and records from Gray Monk. Additionally, the Winoka Co-operative holdings have been successfully re-accessioned.

The People Files have been simplified, so that individuals can look directly under the last name in the file cabinet. The backlog has been eliminated.

A review of the Subject file is underway.

The large Rainbow Ranche donation is being accessioned, with the assistance of a \$1,500.00 grant from the Vancouver Hamber Foundation. A number of the papers are in fragile condition and are being treated as they are reviewed, in order to preserve them and to minimise further damage.

The Archivist set up meetings with a number of Archival depositories in order to review practices.

An updated Archival Collections Policy was developed and passed. A copy is available on the website.

Plans for 2013/2014

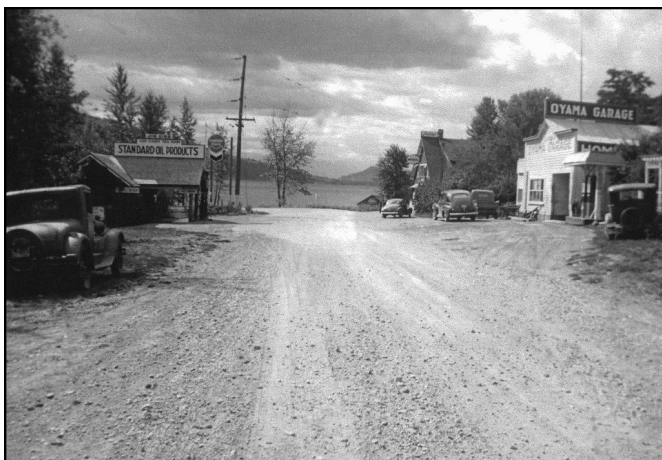
Professional Development: - Attendance at annual BC Archives Association Conference in early May - Visit to Woodstock Archives in late May - Attendance at Thompson-Okanagan Annual General meeting in June.

Archival Records Online: There is no public access catalogue for the collection at present. Anything mounted onto our site has to be entered digitally, and can only represent a small part of our collection. A direct web presence would allow more information on the contents of the archives to be readily searchable by users from a distance. PastPerfect, the software cataloguing tool used by the Museum and Archives is not currently internet/web compatible. Any information entered locally needs to be re-entered in another format. This inhibits not just public access, but our ability to add records collaboratively with other archives. I will be exploring possibilities actively over the next year.

Expanded storage: The Archives is at capacity and will need to relocate some of its holdings and find other storage for new items.

Publicity and Display: I would like the Archives to mount a display, in conjunction with the Curator, consisting of items from the Rainbow Ranche Collection. The donation has records dating from 1908, when James Goldie, then 28 years of age, bought a share in Rainbow from Frank Hewer and became the ranch manager. The other two owners, John Ernest McAllister and Captain Robert Stanhope Dormer, lived in Toronto and England respectively. Early letters and accounts back and forth are numerous, and tell a fascinating story, both economic and social of the life at Rainbow Ranche and the challenges of establishing a fruit operation. This information would also be a valuable addition to our website.

Laura Neame, Archivist



Public and Community Programming

Tours and School Groups

The Museum hosted a number of guided tours and programs during 2012, including retirement homes from Kelowna and Vernon, the Lake Country Boys and Girls Club, Davidson Road Elementary School Grade 3 classes, and 46 Grade 6 and 7 students from General Wolfe School in Vancouver.

The LCMA offered History Strolls of Okanagan Centre and Winfield in June 2012, advertised and booked through the DLC Spring Leisure Guide; these unfortunately were not successful and a new community program/workshop on Genealogy is planned for 2013.

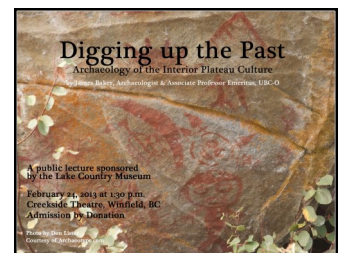
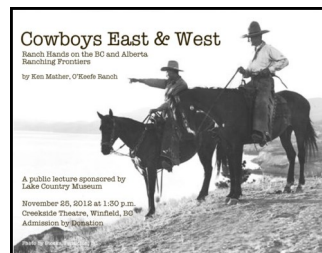
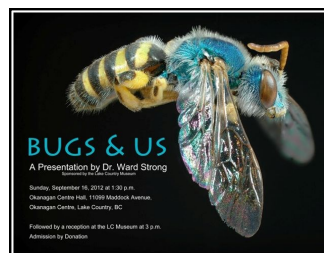
The Okanagan Brigade Trail group toured the Museum in August, with over 200 people camping at the Museum Park overnight.



LCMA Lecture Series

The museum presented three public lectures in 2012 and one in early 2013. This program has been very well-received by the community and the LCMA plans to continue offering free, public lectures.

- January 2012: *The Ghosts Around Us: Military Training in the Okanagan*, by Dr. Howard Hisdahl
- September 2012: *Bugs and Us*, by Dr. Ward Strong
- November 2012: *Cowboys East and West*, by Ken Mather, Curator O'Keefe Ranch
- February 2013: *Digging Up the Past: Archaeology of the Interior Plateau Culture*, by James Baker, Professor Emeritus UBCO



Centrepiece

Centrepiece is the Lake Country Heritage and Cultural Society's annual community picnic and takes the form of a 1920's garden party. The event includes activities for the whole family to enjoy, such as a Devonshire tea, children's games, and musical performances. Centrepiece 2012 took place August 26th, with attendance of approximately 500.



CENTREPIECE

The Lake Country Museum invites you to a day of community celebration

Okanagan Centre Park
August 26, 2012
11:00am – 3:30pm

Barbequed Hamburgers & Hot dogs
(with all the trimmings)
Root Beer floats, pop & juices
Tea & scones with strawberry jam & fresh whipped cream

Centrepiece is our annual community picnic and takes the form of a 1920's garden party. It is the perfect opportunity to meet and catch-up with other community members and is an ideal way to wrap-up the glorious Okanagan summer!

The event includes fun activities all day, with races and activities for the whole family to enjoy! Some of the highlights include a Devonshire tea, children's games, and performances by local musicians.

11255 Okanagan Centre Road West
Lake Country, British Columbia, V4V 2J7
Phone: 250-766-0111
Email: info@lakecountrymuseum.com
www.lakecountrymuseum.com

Lake Country Museum

Website

The re-designed website was launched in March 2012 after many months of design and editing. The new design is attractive and effective and the addition of the CMS (content management system) has made the site fairly simple to update and edit independently. The website includes text-searchable files, such as the Life Histories Manuscripts and the LCMA online history files, an RSS feed, and links to the Museum's Blog, Facebook Page, and You-Tube Channel.

With limited physical space at the Museum, the website allows the LCMA to bring our exhibits and archives into the community and provides easy access for researchers of Lake Country's history.

WEBSITE STATISTICS

Daily Average number of Hits on the *Lake Country Museum* website:

- April 2010 to March 2011 was 772;
- April 2011 to March 2012 Daily Average Hit rate increased to 1,247;
- April 2012 to March 2013 Daily Average Hit rate increased to 5,383.

2012 – 2013 GOALS MET

The goals for 2012 – 2013 that were set at the Annual General Meeting in April 2012 have, for the most part, been met. These goals were:

Creation of a website Manual

This Manual continues to be updated, and this process will be on going as new policies are put in place and portions of the website are modified.

Continuation of protocol development

Protocols for information added to the website are continual-ly maintained.

Maintenance of currency of the website

Manager, Shannon Jorgenson, has maintained the *Facebook* account (with assistance from the Summer Students who very capably maintained it during the 2012 summer season); Andy Miller volunteered to update and maintain the *YouTube* account; and I assumed responsibility for the *Blog*. These social media features require regular, and frequent, maintenance.

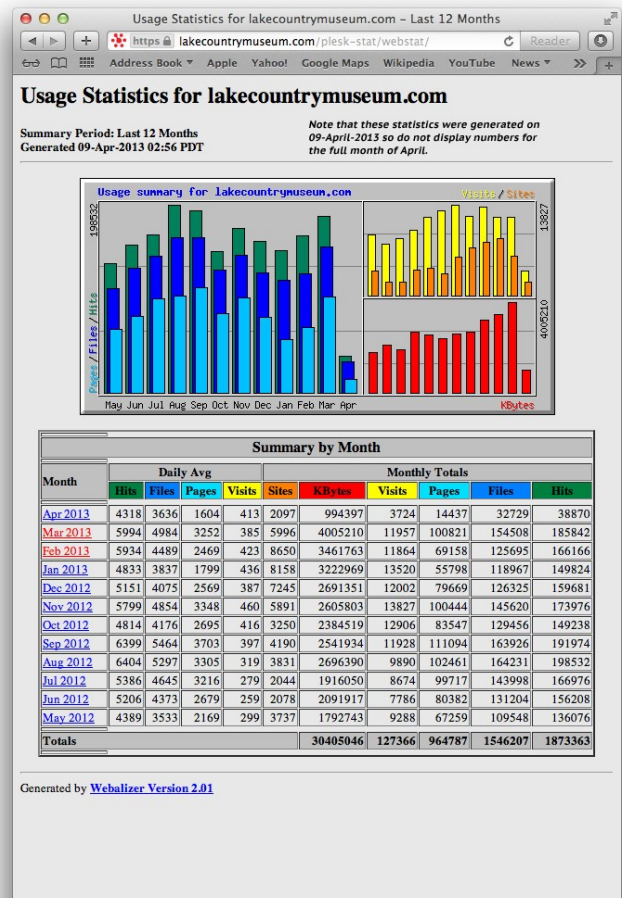
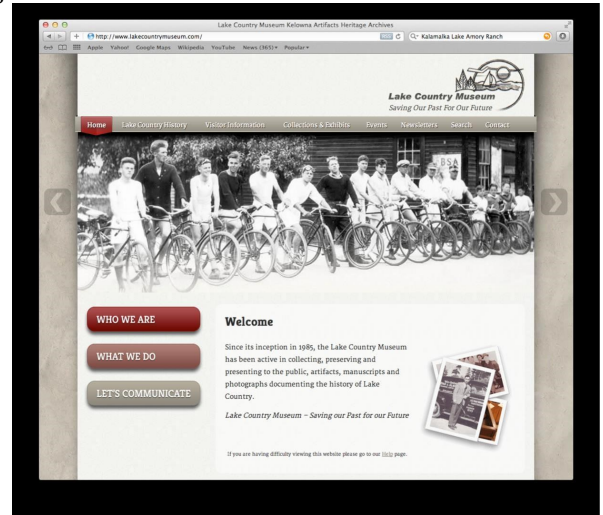
Addition of the website as a baseline budget item

A baseline item (\$1,000.00) for website development was approved the for the 2013 budget.

2013 – 2014 GOALS

Transfer portions of the Royal BC Museum's Living Landscapes project

This transfer is currently in progress. The portions being transferred at this time are the *Field Guide to Wildflowers* and the *Kokanee Salmon Heritage Project*. If additional money becomes available the *Letters of Dorothea Allison* will be transferred as well.



Maintenance of currency of the website

Regular, and frequent, maintenance is necessary for the social media portion of the website – *Facebook*, *YouTube*, the *RSS*, and the *Blog*.

Certain modifications to the website design are being investigated:

- changing the logo from Lake Country Museum to *Lake Country Museum and Archives*;
- modifying the Home Page to include an area to feature Sponsors;
- modifying the Home Page to make the Blog and Facebook icons more visible (i.e. adding a second icon further up the page);
- making it easier for readers to make donations online.

Community Projects

Heritage Markers

A fifth heritage marker was completed and installed in Beasley Park, Winfield, which displays the history of the Woodsdale Flats.



The Japanese Canadian Pioneers of Lake Country, BC 1899-1939

In June 2012, the Museum launched an online exhibition through the Virtual Museum of Canada. *The Japanese Canadian Pioneers of Lake Country, BC 1899-1939* tells the story of the first Japanese Canadian pioneers of this community and their experiences during the pre-World War II. The core theme of the exhibition is courage, perseverance, and resilience, with stories and histories to highlight this. The exhibition includes the stories of nine pioneer families, 145 photographs, and 23 video or audio clips. The online exhibition can be viewed at: www.museevirtuel-virtualmuseum.ca.

The LCMA is currently working on a book featuring the stories and photographs presented in the VMC exhibition; the anticipated publishing date of *Kakonosedai: A Century of Community* is June 2013.



The LCMA/LCHCS plans to continue featuring the histories of Lake Country's Japanese Canadian Pioneers through 2013, and have applied to the Leon and Thea Koerner Foundation for project funding. The Lake Country Heritage and Cultural Society proposes the launch of four events through the summer and fall of 2013 to celebrate the history of the Japanese Canadian community of this region and to commemorate the 25th anniversary of Redress. The project includes the publishing and printing of 350 copies of the book *Kakonosedai: A Century of Community*, a special exhibition at the Museum, a public lecture on the topic of Japanese Canadian history and the 25th anniversary of Redress, and Japanese cultural performances and activities at Centrepiece. Each of the project components will be partially or fully digitized and mounted on the LCMA website as a permanent legacy and to provide public accessibility.

Life Histories: Historical Manuscripts of the District of Lake Country

Funded and mentored through The Irving K. Barber Archives at UBC, the Museum has digitized forty-seven original manuscripts which describe various aspects of Lake Country's history from the late 1800s to the 1950s. The text-searchable manuscripts were uploaded to the LCMA website in the spring of 2012.

Community Memories

The Armstrong Museum hosted a regional archival workshop in June 2012, at which the LCMA presented our work in the Community Memories project of collecting family histories. The Community Memories project is multi-faceted and includes written memoirs, photographs, audio interviews, and video interviews of long-time area residents. A number of museum volunteers are active in collecting interviews and each fall several students from UBCO assist with assigned and guided interviews. Thirty-seven interviews have been completed to date and are stored in the LCMA Archives.

UBC-O Education Department Partnership

In the fall of 2012 (Sept-Nov) we again partnered with the UBC-O Education Department students. The eight students working with the LCMA completed short movies on aspects Lake Country's history, collected oral interviews, and created storybooks of pioneers as part of their classroom assignments.

The completed movies can be viewed online at

YouTube.com

UBC 2012 GREEN EDUC 417



District of Lake Country Heritage Survey

The LCMA worked with the District of Lake Country through 2012 to initiate a heritage survey of Lake Country. In May 2012 a community Heritage Values Workshop was facilitated by Berdine Jonker and Judith Cook of the BC Heritage Branch. The workshop served as the first step towards the ongoing conservation of Lake Country's heritage buildings and sites. The objectives of the workshop were to inform the community of British Columbia's values-based heritage management system, to encourage community engagement and input, and to establish a framework for the evaluation of heritage places. The LCMA prepared the initial workshop report and will continue to assist the District of Lake Country in identifying potential heritage buildings and sites.

History Pins

Research and work began in 2012 to select historical sites in Lake Country, where History Pins will eventually be located. History Pins are a collection of photographic images, videos, audio clips and descriptive and narrative text, which are 'pinned' to a site. Visitors to the site can access the collection on-site through the Smartphone App. Collections can also be viewed online at www.historypin.com.

LCMA Arnold Award

The Lake Country Museum's COBSS Arnold Award of \$500 was presented to Lucas Anderson, George Elliott Secondary School, in May 2012.

Central Okanagan Heritage Society Award

The Lake Country Heritage and Cultural Society are pleased to congratulate Rosemary Carter on receiving the Distinguished Community Service Award for her community and volunteer work in heritage. Rosemary, who has made extensive contributions to heritage preservation throughout the Okanagan, was presented with the award by the Central Okanagan Heritage Society at their Annual General Meeting in February 2013.



Communities in Bloom

Museum staff and volunteers worked with the District of Lake Country's Communities in Bloom program, providing sections and photographs for the Community Profile book, assisting with the judges' tour, and with the general logistics. The CiB committee and judges enjoyed lunch at the Ok Patio Café as part of the program. The District of Lake Country was awarded four blooms in 2012 and a special mention for the concept and development of the arboretum at Jack Seaton Park. The District scored highest in the landscaped areas category among all competing B.C. communities.



Other Events

The LCMA participated in the UBCO/DLC Trade Fair on September 25th with an informational display and a raffle prize.

LCMA staff and volunteers assisted with judging at the Vernon & District Heritage Fair and the Okanagan Regional Heritage Fair.



Building and Grounds

The District of Lake Country has supported the Museum in many day-to-day operations and maintenance, including installing hand rails at the front entrance and steps, rebuilding the gateway entrance with a new roof, building hand rails for the stairs into the furnace room, painting signage for handicapped parking, and assisting with Annex cleanup and garbage removal. A set of seven chairs were donated for use in the Archives. The District also worked with the Museum to assist the LCMA in obtaining full funding through BC Hydro to install LED lighting throughout the building, a value of over \$2400.

Professional Memberships

The Canadian Heritage Information Network /CHIN

The Canadian Museums Association (CMA)

The BC Museums Association (BCMA)

The Archives Association of BC (AABC), Associate Member

The LCMA is registered with the Institute for Canadian Citizenship Cultural Access Pass program for new immigrants.



Lake Country Museum History

The Lake Country Museum has seen many changes over the past twenty-seven years, from the first vision of a community museum and parkland to the extensive artifacts and local history collections today.

The Okanagan Centre Elementary School was built in 1932, replacing the first school of 1911, and a second classroom was added as the community grew. The school population fluctuated over the years as other areas of the District of Lake Country developed, and the school closed permanently in 1984. As a school district trustee, Helen Gatzke knew about the closure. She, along with other members of the local Ratepayers Association, thought that the school property should be kept intact and used for the benefit of the community. On June 18, 1984 the Lake Country Heritage and Cultural Society was formed, with Helen Gatzke elected as the first president, Ron Carter the treasurer, and Jane Arnold the secretary. In June 1985, School District #23 advertised for bids to purchase the property. The Central Okanagan Regional District was prepared to bid \$1000 for it, and over 500 members of the community signed a petition expressing support for the CORD bid. In September, CORD agreed to grant the Heritage Society a long term lease and to maintain the grounds if the School District would turn over the property to them. At a regular meeting of the Board of Trustees, the members voted unanimously to turn over the building and property to the Regional District for the sum of one dollar. It has housed the museum ever since.

