

Annual Report

Lake Country Heritage and Cultural Society

2015



Lake Country Heritage and Cultural Society / Lake Country Museum and Archives
11255 Okanagan Centre Road West
Lake Country, BC V4V 2J7
www.lakecountrymuseum.com



President's Report to the AGM

The past year has been a year of great progress for the Lake Country Heritage and Cultural Society (LCHCS) and its major project, the operation of the Lake Country Museum and Archives.

We rotate exhibits at the Museum and maintain satellite exhibits at the Municipal Hall, George Elliot Secondary School, the Lake Country Community Complex and the Oyama Community Hall. Collaboration between Curator Dan Bruce and Ruby Alexis of the Okanagan Indian Band has resulted in a significant exhibition, *The Okanagans and Their Neighbours: An Exhibition of the Okanagan Syilx People*. It includes an exhibit of artifacts found at the archaeological dig at the foot of Pretty Road.

Because the Museum is not located centrally in Lake Country, our outreach program is significant to our community identity. We maintain an active Internet presence through our website, Blog, Facebook page and YouTube channel. Other elements of the Museum's outreach program are the *Lake Country: Origins in Time and Place Teaching Guide and Student Book*, the Heritage Driving Tour, and the ongoing History Pins project and community lectures. We have previously collaborated with the District of Lake Country in placing historical markers around the community at strategic places where residents and tourists gather. My hope is that this program can be renewed to include natural history and both Okanagan Indian and settler history. Pelmeash Parkway and the new Okanagan rail trail are obvious places to erect some of these interpretative kiosks.

Our Archivist, Laura Neame and two or three committed volunteers are busy rationalizing and cataloguing our collection. Work is continuing on conserving and accessioning the large Rainbow Ranche Collection and numerous smaller collections that we solicit or are donated. Interviews with pioneers and with Lake Country artists are adding much value to our archival collection.

Two significant current projects are *Applebox Belles: The Women of Lake Country's Packinghouses*, a Canadian Museum of History/Virtual Museum of Canada on-line exhibition featuring women who worked as packers, sorters, or stampers in area packinghouses. This exhibition will launch this summer. The documentary film and booklet on Lake Country's artists was launched in January 2016 and is an exceptionally valuable record of one element of the cultural life of our community.

I would like to recognize the significant contributions to our success to our Manager, Shannon Jorgenson, our Curator, Dan Bruce, our Archivist Laura Neame, our committed hands-on Board and our hard working volunteers. Together this team makes an incredible contribution to the cultural life of Lake Country.

The Lake Country Heritage and Cultural Society continues to be generously supported by the District of Lake Country and for this support we are appreciative.



Duane Thomson
President
Lake Country Heritage and Cultural Society
April 14th, 2016



The Lake Country Heritage and Cultural Society

Lake Country Museum and Archives

2015 Highlights

The Museum, located at the shore of Lake Okanagan, houses artifacts, archival photographs, and collections from the District of Lake Country's earliest days. The main building of the Museum is a historic two-room schoolhouse, where students were taught from 1932 to the mid-1980s. The Museum also includes the Annex, an outdoor exhibit area, and the Wentworth Cabin. The Lake Country Museum and Archives are open year round. Admission is by donation.

Staff/Volunteers

The LCMA currently has two part-time contractors, Curator, Dan Bruce, (2 days/month) and Manager, Shannon Jorgenson (16 hours/week). The LCMA filled two summer student positions in 2015, with wages partially paid through HRDC Canada Summer Jobs funding.

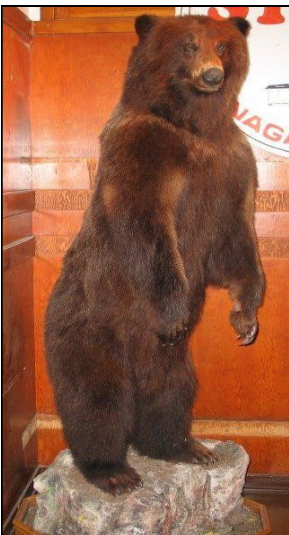
In 2016, the LCMA hopes to have two full-time summer students for 14 weeks, from mid-May through August.

The LCMA has an active, working Board of 13 and an additional 14 regular volunteers, without whom the Museum could not operate. Volunteers contributed 3151.5 hours in 2015.

The Lake Country Museum opened seven days a week through the summer of 2015 (mid-May through Labour Day). During the winter months, the Museum was open three days a week, on Mondays, Wednesdays, and Saturdays, and also opened additional days on request for tour groups and researchers.

The Ok Patio Café, operated by a lessee, was open seven days a week, weather permitting, from mid-May through Labour Day.

During 2015, 1700 people visited the Museum. Outreach audience was an additional 450 people and 150 people attended Centrepiece to total 2300 public audience. One of the LCMA's ongoing goals is to continue to increase visitorship to the Museum. This is being accomplished through special exhibitions, community workshops and public lectures, partnerships, and increasing community awareness through our website, Facebook page, and print media.



Membership

In 2015 the LCHCS completed a review of its membership in an effort to ensure that the list of members and their contact information is current and that members are apprised of the benefits of membership. Members now are those who, because they have made a contribution to the Society, have been offered membership. There are currently 175 members.

Collections & Archives

Through its exhibits and archives, the Museum tells the story of the District of Lake Country and its four wards of Winfield, Oyama, Carr's Landing, and Okanagan Centre. The Museum's artifacts include items relative to the Okanagan First Nations, histories of the orchard, wine, and ranching industries, turn of the century living, and collections from the early Japanese community. The outdoor exhibits include an antique pleasure boat, farm wagons, ploughs, and the 1906 Wentworth Cabin. The Archives currently house over 4000 photographs, a large collection of manuscripts, ledgers, maps, library books, and a full collection of the Lake Country *Calendar*. The Museum's collection of over 4500 artifacts is either on display or in storage and rotated on exhibit. The majority of items in the collection have been donated by local residents.



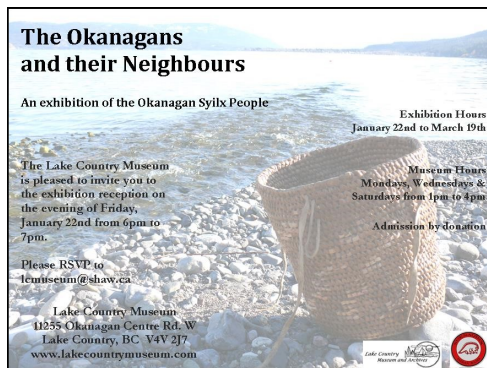
The LCMA collection continues to grow, with donations of primary documents, photographs, and objects important to Lake Country's history and development.



Exhibits

Permanent Exhibits

The LCMA's permanent exhibits include gallery areas featuring Ranching and Blacksmithing, Tools, Orchards and Packinghouses, Irrigation, the Harvey Insect Collection, Lake Country's Schools, and the General Store.



Special Exhibitions: The Okanagans and their Neighbours

The Okanagans and their Neighbours. An Exhibition of the Okanagan Syilx People, curated by Dan Bruce, curator of the Lake Country Museum and Archives, and Ruby Alexis of the Okanagan Indian Band, was installed at the Museum through the fall of 2015. Shown publicly for the first time were artifacts excavated from the old village site at the foot of Pretty Road on the old shore of Wood Lake. The exhibition officially opened January 22nd and continued to March 19th, 2016.

Satellite Exhibits

The LCMA featured six satellite exhibits at the Municipal building through 2015. Exhibits included Calendars, Main Street, Central Okanagan Sports Hall of Fame, Hit Parade, Movember, and Christmas Tree.

The LCMA also maintains satellite exhibits at George Elliot Secondary School and at the Lake Country Community Complex.



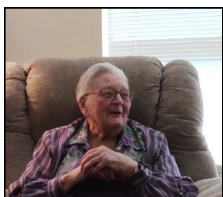
Oyama Legacy Exhibit

The LCHCS continues to work with the Oyama Community Hall Association to complete the permanent, legacy exhibition commemorating the 100th anniversary of the Oyama Hall and Community Club. The Legacy Project features exhibits of artefacts and an eventual series of thirteen wall-mounted heritage panels which recognize and celebrate various aspects of Oyama's history. The final four panels will be completed in 2016.

The Project also includes hall upgrades and audio-visual equipment to expand the community's use of the hall to public presentations, history talks, and community events.



Canadian Museum of History / Virtual Museum of Canada Exhibit *Applebox Belles*



The exhibition, *Applebox Belles: The Women of Lake Country's Packinghouses*, will present the experiences of the women working in Lake Country's early packinghouses from the early 1900s through to the 1950s. The online Community Memories exhibition will showcase the personal experiences of the apple wrapper flappers, the summer girls, and the orchard wives and will include first-hand accounts and interviews with these women and their descendants.

The orchard industry and packinghouses are an integral part of Lake Country's history, from the plantings of the first seedlings in 1907 to the present day. In 1909, the Okanagan Valley Land Company and the Wood Lake Fruitlands Company planted extensive apple orchards, alongside the smaller, independent orchards, and the community became established as a fruit growing center of the Okanagan. During the period 1909 through to today, at least twenty packinghouses have operated in Lake Country, employing primarily women who worked as



packers, sorters, or stampers. Today, the Lake Country packinghouse is one of the major packinghouses in the Okanagan, still employing many women as packers. As an historic exhibition, *Applebox Belles* presents the story of the early years, prior to the changes in packinghouse operations.

The exhibit will launch August 2016 on the Virtual Museum of Canada's website. It will be presented in both English and French. Photographs will include alternate text and the five videos are closed captioned. This project is funded through the Canadian Museum of History.

Curator's Report

From the curatorial point of view, the most important development has been access to storage space. This enables us to organise collection items that are not currently on exhibition, and we have been in urgent need of such space for several years.

Mr. and Mrs. Len Jupp of Kelowna have donated a fine collection of almost forty pieces of pressed glassware. These, with the addition of other specimens from Jim and Gretchen Dawson give us the basis of a significant collection. Randy Nagle and Shirley Galenkamp have also added to their previous donation, a collection of Navajo silver and turquoise jewelry. This includes an impressive watch strap that once belonged to the late "Slim" Haugen.

It is encouraging to see our collections grow, bringing in objects of relevance to Lake Country's past, and also the wider experience and interests of our residents.

Dan Bruce, Curator

Archives Report

DONATIONS

John Schmidt Collection:

A significant donation of several hundred items was received from John Schmidt, consisting of minutes, notes and correspondence concerning:

- Lake Country Days,
- Queen's Committee,
- Parks Board correspondence,
- Parks and Recreation Committee (PARC) files,
- Greenspace Plan documents
- Foreshore Committee minutes and documents.

These ranged from the mid - 1980's to the mid 2000's. The information was entered into Past Perfect, and the material stored in acid free folders and boxes. There were also a number of photographs associated with the Foreshore Committee., illustrating infringements on, or violations of the foreshore.



Carter Collection:

The work on this collection began in 2014, and was completed in 2015. Mary Jeglum (Carter), the elder daughter of Nelly Carter, had left a collection of photographs to the Archives, but these have only this past year been entered in their entirety. These added to the photographs already entered from her sister Nora McGrath (Carter.) Most of the photos were taken in the 1930's and forties, and depict life in Okanagan Centre.

Okanagan Centre Heritage Conservation and Planning Society Collection:

These files date from 1993 to the dissolution of the committee in 2000. The committee was organised and led by Caroline Houston, and its purpose was to develop and maintain a register of historical signs properties and roads, and to maintain the character of Okanagan Centre. This work is still in progress, having been entered, in part into Past Perfect. The last part, to accession the partially completed register, has not yet been started.

George Goulding Collection:

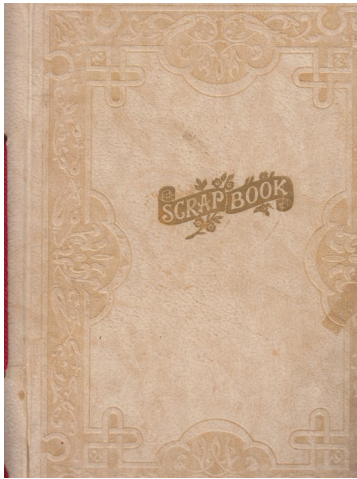
Items to be accessioned and digitised are in eight albums. Three of these have been digitized and entered into PastPerfect. They have been stored in acid free envelopes in photograph boxes. The exception is the images in album 1. These were glued to the album and remain there. Acid free sheets have been placed between the pages, and the location of the originals noted in PastPerfect. Further work on this collection is planned for 2016.



Mary Carne (White) Collection:

Mary White and her sister grew up in Winfield, on an orchard at the top of Berry Road on Okanagan Centre Rd. East, then know as Upper Road. She has donated a large collection of photographs, most spanning the years from 1939 to 1946 when she was in elementary and high school. They provide a record of school, both the Winfield elementary, and the high school in Oyama, and life at that time.

Mary White also donated a scrap album in which she stored newspaper clippings, many related to those who were in the Canadian armed forces. These have provided a bit of a challenge, as the newsprint, and the paper they were taped to have suffered deterioration over time.



Other:

In addition to work on donations, the Subject Heading file reorganisation was finally completed, and is available on line.

In mid June I visited two of the trustees of the J.E. McAllister Bursary Foundation for the University of Toronto Engineering School in Niagara on the Lake. They were delighted with the photocopies and information they acquired from our Rainbow Ranche Collection, and have donated to the Heritage Society as a result. J.E. McAllister was 50% owner of the Rainbow Ranche from 1908 until its sale in the late 1940's.

I attended a workshop given by the Kelowna Museum on photographic restoration. This proved even better value than I had hoped, and resulted in trialing al method of removing glued photos from old albums. Suffice it to say, it involves damp blotting paper and a palette knife and it works, though care and time are required.

Laura Neame
Archivist

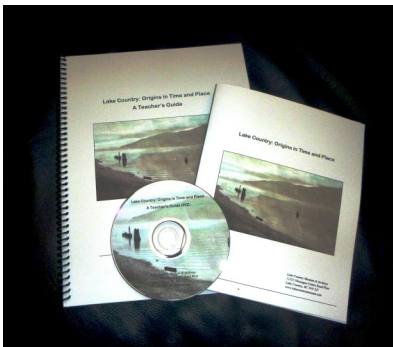
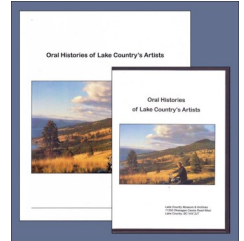
Public and Community Programming

Community Memories Interviews

The LCMA staff and volunteers conduct video and/or audio interviews to preserve Lake Country's history. The Museum has 77 interviews in the Archives, which include local history interviews, Community Builders interviews, and local artists. Also included in the Oral Histories collection are three tracks of *CKOV Radio Oldtimer's Microphone* and fourteen episodes of *Pioneers and Places*.

Oral Histories of Lake Country's Artists

Through 2014, the Lake Country Museum and Archives created a documentary film and booklet of twelve local artists, which launched in January, 2016. Copies have been provided to each of Lake Country's schools, to UBCO, and to the Okanagan Regional Library. Additional copies are available for sale at the Lake Country Museum.



Lake Country: Origins in Time and Place Teaching Guide and Student Book

The Lake Country Museum & Archives/Lake Country Heritage & Cultural Society published a set of local history resources for Lake Country's schools and distributed several full classroom sets to Lake Country's four schools in September 2015. The resource, *Lake Country: Origins in Time and Place*, includes a student book of fifteen stories about our community's history, a Teacher's Guide of suggested lesson plans, and a DVD of digital images. The lesson plans and student activities include materials that highlight the people and events that are significant to our local community, using inquiry-based learning, Socratic questions, and research activities using primary source material. The Teacher's Guide DVD includes authentic reproductions of primary source documents,

maps, and photographs, with the original documents available to teachers and students through the Archives. A Discovery Trunk of artifacts relating to each of the stories is also available for sign out or with museum outreach presentations.

The project was funded through **The History Education Network (THEN/HiER)** to create local teaching materials to match BC's new K-9 Social Studies curriculum.

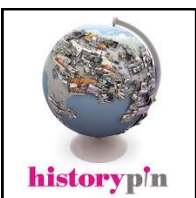
Heritage Driving Tour

The Lake Country Heritage and Cultural Society launched a free mobile app and a print guidebook of a Heritage Driving Tour of Lake Country in November 2015. The Heritage Driving Tour is a self-directed tour of Lake Country with thirteen heritage stops and additional optional stops at local wineries and points of interest. The tour begins at the District of Lake Country Municipal Building, 10150 Bottom Wood Lake Road but can also start at any of the stops. The tour is a total distance of 48 km and will take approximately one hour without stops and up to four hours with stops.



The mobile app of the Heritage Driving Tour is available online at:

<https://www.historypin.org/>. From the History Pin home page choose **Profiles** then search Lake Country Museum. The Heritage Driving Tour is located under **Tours**. The print guides are available at the Lake Country Museum, the Lake Country Chamber of Commerce, and Intrigue Wines and sell for \$7/each. Print costs were funded by The Central Okanagan Foundation.



History Pins

Research and work began in 2012 to select historical sites in Lake Country, where History Pins have been placed by the LCMA. We currently have 195 sites pinned, with five grouped collections and one tour. The sites can be viewed online at www.historypin.org.

Public Programming

The Museum presented a number of guided tours and outreach programs during 2015, including the Lake Country Boys and Girls Club, the Winfield library Summer Reading Club, retirement homes, and a Mother's Day Tour and old-time photo booth. The LCMA held teacher in-service presentations at each of Lake Country's four schools to introduce the Origins curriculum package. Origins: Lake Country History was presented to 150 Grade 7 students at George Elliot Secondary, at Lake Country Lodge and Lake Country Manor, and to the Winfield United Church Men's Group. History of Fir Valley was co-presented with Ron Taylor to the Clark—McMaster family reunion. Other presentations were given by Duane Thomson to local organizations.

The LCMA in partnership with The Kelowna and District Genealogy Society presented an Introduction to Genealogy Workshop again in April, 2015.

The LCMA partnered with Sparkling Hills Resort, who featured the Museum in their activities brochure. The Museum was also included in the Okanagan Landing Museum's History Tour.



Heritage Week

Heritage Week 2015 featured the theme Main Street. The LCMA worked with museums and heritage organizations throughout the Central Okanagan to present a series of events and a joint exhibition at the Royal Anne Hotel. The LCMA created a short DVD, *Main Street: At the Heart of the Community*.



The LCMA partnered with the Heritage Week committee again through the fall of 2015 to develop events and activities on the theme of *Distinctive Destinations* for Heritage Week 2016.

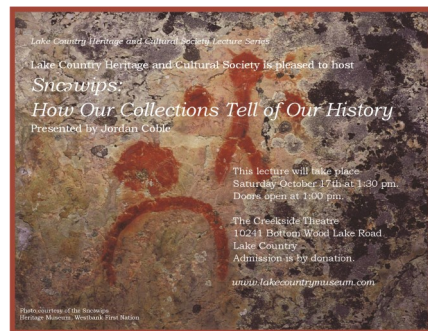
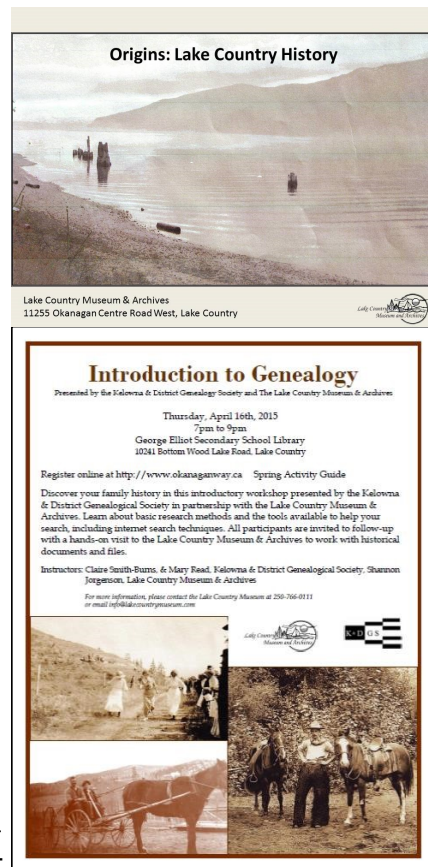
LCMA Lecture Series

The LCMA offered two public lectures at the Creekside Theatre in 2015. The LCMA plans to continue offering free, public lectures and presentations at various venues.

Flowing Values: The Evolution of Water Governance, presented by Dr. John Janmaat February 15th, 2015.

Sncəwips: How Our Collections Tell of Our History

Presented by Jordan Coble, Cultural and Heritage Researcher for the Westbank First Nation Sncəwips Heritage Museum October 17th, 2015.



Community Projects and Partnerships

UBC Partnership

In 2015, the LCMA worked with The History Education Network and advisor Dr. Vicki Green to develop a local Social Studies curriculum guide. This was published in September 2015 and provided to Lake Country's four schools to coincide with implementation of the new curriculum.

The UBC-O Education Department did not implement a museums-based Social Studies course in 2015. The LCMA hopes that this will be re-activated in 2016.



The Okanagan Indian Band

We are pleased to have worked with the Okanagan Indian Band in 2015 and 2016 and hope to further develop this partnership.



LCMA Arnold Award

The Lake Country Museum's COBSS Arnold Award of \$500 was presented to Lauren Kim, George Elliott Secondary School, in May 2015.

Heritage Planning

The LCHCS/LCMA maintains working partnerships with the Central Okanagan Heritage Society and Heritage BC and continues to work with the District of Lake Country on heritage issues and the placement of heritage markers throughout the community.



CentrePiece

CentrePiece is the Lake Country Heritage and Cultural Society's annual community picnic and takes the form of a 1920's garden party. Centrepiece 2015 highlights included children's games, musical performances, and an old fashioned dress-up photo booth. Attendance at Centrepiece was approximately 150.



Website Report

The website continues to be one of the faces of the Lake Country Museum and Archives. Its collection of archival and photographic information, accessible to the public, continues to grow. The website also provides a connection to the Museum through *YouTube* and *Facebook*.

Website Statistics

Last April 1st (2015) we changed our website statistic-gathering software from *Webalizer* to *Google Analytics*. Consequently our website statistics look very different than in the past. Currently 54% of our users access the Museum website on a desktop, 32% on a mobile device, and 14% on a tablet. The “bounce rate” (i.e. users that click only on the Homepage and go no further) is 79% for mobile devices, and 67% for tablets – a strong indication that we should convert our site so that it is fully functional with mobile devices.

Social Media

The social media buttons now appear in two places on the Homepage of the website.

The manager maintains the *Facebook* presence in the winter months and summer students maintain it during May through August. In addition to historical vignettes and photographs, Facebook provides announcements that alert the Lake Country community of heritage and community events throughout the Valley.

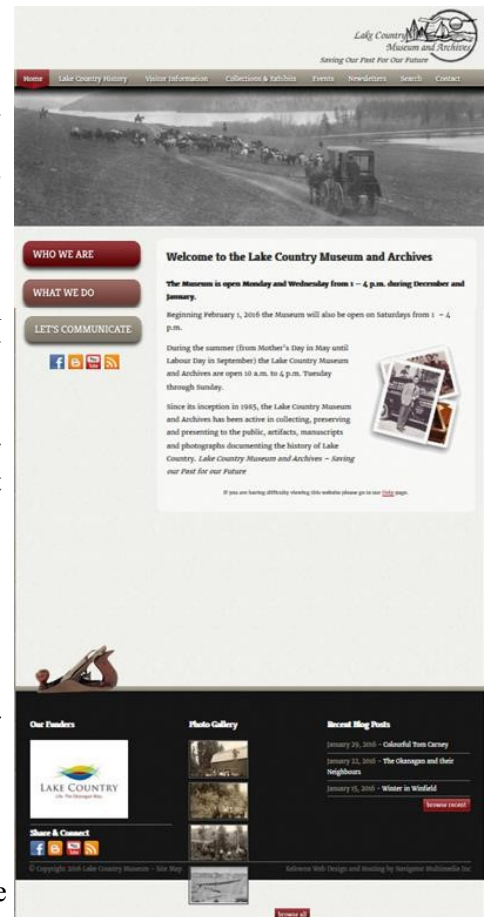
The manager also maintains the Museum’s *YouTube* channel. On YouTube one is connected to Heritage Week events and interviews of Lake Country residents (e.g. the Japanese Canadian community project and the Artists series project) as well as student-produced videos from the UBCO Education students. The manager has started adding interviews for the current *Applebox Belles* project that will be completed in the fall of 2016.

The Blog, maintained by Webmaster Carol Thomson, continues to provide historical vignettes and photographs on a weekly basis and a limited number of announcements when appropriate. There have been 332 posts (as of 2016-04-14) since the Blog’s inception. Although the number of subscribers is relatively low (151 as of 2016-03-29) there is substantial, and very interesting, feedback and appreciation from readers. For example, CBC requested an interview, many posts are reproduced in local newspapers, and a number of pioneer families have responded with much personal information. There is a need for more guest bloggers and for more information about the Museum’s artifact collections. Currently the posts are heavily weighted with archival information.

2015 Goals

- transfer and edit the *Letters of Dorothea Allison*;
- upload to our site, or link to the Canadian History Museum, new projects such as the *Applebox Belles*, *The Women of Lake Country’s Packinghouses*;
- upload the LCMA *Heritage Driving Tour*;
- continue to maintain the website – adding monthly displays, events, documents, collections, exhibits and major exhibitions such as the aboriginal project, *Full Circle 2015*;
- continually update the Users’ Manual.

Most of these goals were met in some measure in 2015. *The Letters of Dorothea Allison* were transferred, as was the *Heritage Driving Tour* and the exhibition *The Okanagans and their Neighbours* (a reconfiguration of the original *Full Circle 2015* project). In addition to meeting these goals, the print project *Lake Country: Origins in Time and Place*, both Teacher’s Guide and Student’s Book, were uploaded. Website and Users’ Manual updates and maintenance continued. The only uncompleted goal so far for 2015 was the uploading of the *Applebox Belles* project, but that will be done in the fall of 2016 when the project is completed.



2016 Goals

- upload to our site, or link to the Canadian History Museum, new projects such as the *Applebox Belles*, *The Women of Lake Country's Packinghouses*;
- continue to maintain the website – adding monthly displays, events, documents, collections, exhibits and major exhibitions;
- increase the number of blog posts about the Museum's artifact collection;
- have the website made fully functional on all mobile devices;
- review the workings of the website and make improvements to accessibility when funds are available.

Carol Thomson
Webmaster

Building and Grounds

The District of Lake Country supports the Museum in numerous day-to-day operations and maintenance. The LCMA has expanded Museum storage through the lease of a section of the basement in the Okanagan Centre Hall.

Insurance

The museum contents are now covered on an annual basis through Marsh Canada, under our CMA member rate. Coverage includes permanent collections, items on loan, temporary exhibitions, and items in transit.

Professional Memberships

The Canadian Heritage Information Network /CHIN

The Canadian Museums Association (CMA)

The BC Museums Association (BCMA)

The Archives Association of BC (AABC), Associate Member

Okanagan Historical Society

Central Okanagan Heritage Society

The LCMA is registered with the Institute for Canadian Citizenship Cultural Access Pass program for new immigrants.



Lake Country Museum History

The Lake Country Museum has seen many changes over the past thirty years, from the first vision of a community museum and parkland to the extensive artifacts and local history collections today.

The Okanagan Centre Elementary School was built in 1932, replacing the first school of 1911, and a second classroom was added as the community grew. The school population fluctuated over the years as other areas of the District of Lake Country developed, and the school closed permanently in 1984. As a school district trustee, Helen Gatzke knew about the closure. She, along with other members of the local Ratepayers Association, thought that the school property should be kept intact and used for the benefit of the community. On June 18, 1984 the Lake Country Heritage and Cultural Society was formed, with Helen Gatzke elected as the first president, Ron Carter the treasurer, and Jane Arnold the secretary. In June 1985, School District #23 advertised for bids to purchase the property. The Central Okanagan Regional District was prepared to bid \$1000 for it, and over 500 members of the community signed a petition expressing support for the CORD bid. In September, CORD agreed to grant the Heritage Society a long term lease and to maintain the grounds if the School District would turn over the property to them. At a regular meeting of the Board of Trustees, the members voted unanimously to turn over the building and property to the Regional District for the sum of one dollar. It has housed the museum ever since.

